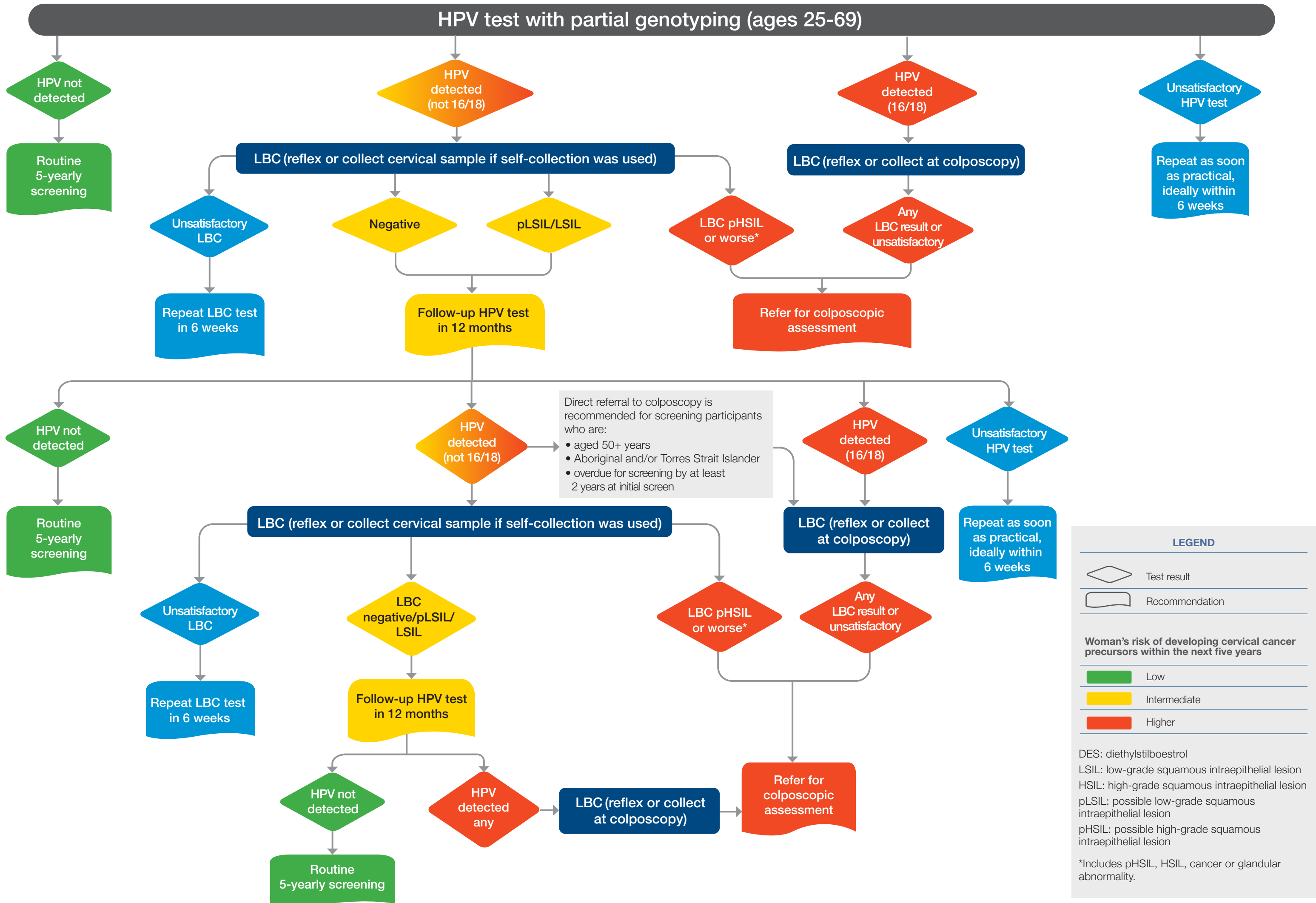


# ROUTINE CERVICAL SCREENING (AGES 25-69 YEARS)



**LEGEND**

◊ Test result  
 ▭ Recommendation

**Woman's risk of developing cervical cancer precursors within the next five years**

Low  
 Intermediate  
 Higher

DES: diethylstilboestrol  
 LSIL: low-grade squamous intraepithelial lesion  
 HSIL: high-grade squamous intraepithelial lesion  
 pLSIL: possible low-grade squamous intraepithelial lesion  
 pHSIL: possible high-grade squamous intraepithelial lesion

\*Includes pHSIL, HSIL, cancer or glandular abnormality.

Suggested citation: Cancer Council Australia Cervical Cancer Screening Working Party. Clinical pathway: Cervical screening pathway. National Cervical Screening Program: Guidelines for the management of screen detected abnormalities, screening in specific populations and investigation of abnormal vaginal bleeding. CCA 2016. Accessible from [http://wiki.cancer.org.au/australia/Guidelines:Cervical\\_cancer/Screening](http://wiki.cancer.org.au/australia/Guidelines:Cervical_cancer/Screening). Updated Dec 2020.